



The First Epistle Worship, Serve, Grow April 2025



Newsletter of the First Presbyterian Church

510 W. Ottawa St., Lansing, MI 48933

Office phone: 517-482-0668

Sunday Worship: 10:00 a.m.

Website: <http://lansingfirstpres.com>

Office hours: 8:00 a.m. – 12:00 p.m. & 1:00 – 4:00 p.m.

Facebook: <https://www.facebook.com/LansingFirstPresbyterian>



COMMUNION WILL BE SERVED ON APRIL 6TH

Palm Sunday – April 13th
Breakfast – 9:00 a.m.

Maundy Thursday – April 17th
Service – 7:00 p.m.

Good Friday – April 18th
Service – 7:00 p.m.

Easter Sunday – April 20th

BOOMERS & BEYOND – Wednesday, April 16 at Noon

Meet us in the Parlor Wednesday, April 16th for lunch. Let us know if you need transportation and we will try to arrange it if possible. If any of our regular attendees can pick up anyone please reach out to others or let us know. We look forward to our next time together. Kathe Smith, 517-230-1814, and Bev Phillips, 517-927-8367.

TLC – Thursday, April 17 at 1:00 p.m.

TLC will meet on Thursday, April 17th at 1:00 PM. This month we will be going to The Irish Pub. It is located at 1910 W. Saginaw St. in Lansing. Please call Judy Hartgerink (517-484-5177) for reservations or information. TLC is a group for women in the church who enjoy fellowship and good food. We would love to have you join us!

SAVE THE DATE for a LUGNUTS OUTING

Rich Blankenship asks that we save the date for this year's Lugnut Outing for Friday, June 13. More details to follow at a later date.

Adult Forum	6
Birthdays	15
Book Group	13-14
Boomers & Beyond	1
Church Calendar	16-17
Church Family	15
Church Staff	14
Deacons Notes	7-8
Earth Care Team	14
Easter for Children	2
Faith Formation	5
Finances in Brief	9-10
Holy Week	1
If Music Be Food Fundraiser	4
Lugnuts Info	1
Mission & Social Justice	11
Music Notes	3
Session Notes	10
TLC	1

EASTER SUNDAY FOR CHILDREN!

Tell your neighbor, tell your friends, tell your family!

Join First Presbyterian Church on **Sunday, April 20 for 10:00 a.m. Easter Worship!**

Children will have “**Children’s Church**” after the Children’s Moment in Litten Hall.

Snack, Bible Story, Craft, Singing

Easter Egg Hunt will happen after Sunday Worship!

ALL ARE INVITED!



MUSIC NOTES with Megan

"The resurrection gives my life meaning and direction and the opportunity to start over no matter what my circumstances." - Robert Flatt

The quick changing month of April is upon us! Not only does the weather have its dramatic ups and downs; our worship will also reflect the direction changes of Lent, Holy Week and Easter.

There are many opportunities for you to be with your chosen church family this month:

April 6 – Last Sunday of Lent (Chancel Choir & Soloist)

April 13 – Palm Sunday (Deacon's Breakfast, Reader's Theater, Chancel Choir)

April 17 – Maundy Thursday ("family" based worship where we move through four stations in our building, Holy Communion)

April 18 – Good Friday (Chancel Choir, Congregational Reading of Passion Narrative)

April 20 – Easter (Chancel Choir, Brass, Timpani, Children's Worship & Egg Hunt)

April 27 – Choral Sunday "Gloria" by Vivaldi (Chancel Choir, Soloists, Chamber Orchestra) and Bells of First

Come and See!

Come and Hear!

Come and Be!

The music staff at First Pres continually prays that you find solace in the grace of God, no matter what your circumstance may be.



Hymns for April to include:

463 How Firm a Foundation	161 Woman in the Night
196 All Glory, Laud and Honor	221 O Sacred Head, Now Wounded
218 Ah, Holy Jesus	799 I Love the Lord
245 Christ the Lord is Risen Today!	238 Thine Is the Glory
254 That Easter Day with Joy was Bright	366 Love Divine, All Loves Excelling

Choral Anthems and Special Music in April to include:

- "Have Mercy on Me" by Clayton White
- "Blessed Assurance, Jesus is Mine" arr William Cutler (Joey Banouch, soloist)
- "Abana" arr Greg Scheer
- "Quando corpus morietur" by G.B. Pergolesi (Katie Sundeen & Megan Higle, soloists)
- "The Strife Is O'er" arr Robert J. Powell
- "All Hail the Power of Jesus' Name" arr Michael Burkhardt

Saturday, April 5 - 7:00 p.m.
St. Paul's Episcopal Church of Lansing

If Music Be the Food...

Concert series by MSU students from
the MSU College of Music to benefit
the First Presbyterian Church Food Pantry

MUSICAL SELECTIONS INCLUDE:

Nine pieces for clarinet and double bass by Hindemith
Wind Quintet Op. 43 by Nielsen featuring flute, oboe, clarinet, bassoon,
and horn

Quintet No. 1 by Ewald featuring trumpet, horn, trombone and tuba
Trio in D major for two flutes and harp from L'Enfance du Christ by
Berlioz

April 5, 2025 at 7:00 p.m.

Admission Free – We encourage you to bring a non-perishable food item
or monetary donation to First Presbyterian Food Pantry

Free parking available in the Roosevelt Ramp on Seymour Street
Located directly behind the church

St. Paul's Episcopal Church

218 W. Ottawa St. Lansing

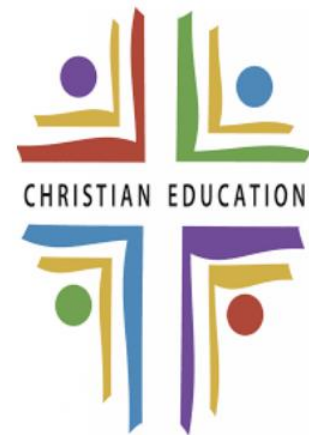
www.stpaulslansing.org

If Music Be the Food

www.ifmusicbethefood.com

Faith Formation at First Presbyterian Church

Our Youth Education Committee is looking for a few Classroom Assistants to help with craft, snacks, etc. during Children Faith Formation. Please let Alyse, Pam or Megan know if you are interested in being a part of our young learners' Christian Education!



CHILDREN, YOUTH & ADULTS!

4 years – 12 years Age Children!

Sunday Morning Faith Formation!

During the season of Lent, our younger learners will be utilizing the same materials/scripture as our adults...Our congregation will be challenged on what it means to MAKE DISCIPLES. Let's journey together through Lent!

April 6 – “Teach and Learn About Jesus” with Ms. Megan

April 13 – “Trust in Jesus’ Presence Always” with Pastor Bob

April 20 – EASTER EGG HUNT

April 27 – “CARE FOR OUR CREATION: Water” with Ms. Alyse

Youth (Middle and Senior High)!

Our Middle and Senior High Faith Formation continues our fellowship with Holt and Okemos Presbyterian churches this winter. These groups come together every Sunday evening (September – May). We are so glad that our young people have ways to share their faith with others in our larger community!

If you have a student in grades 6 – 12, see Megan Higle or Pam Blair to find out what opportunities exist. ☺

If Youth Group is not “your thing,” please see Megan Higle, Pam Blair, or Alyse Collins for a schedule of youth Bible Study and opportunities for service within our congregation.

Adults!

WEEKDAY BIBLE STUDY OPPORTUNITIES

Faith Formation (Adult Forum) will deepen our knowledge of our community. We hope you can attend these informative, historical, and relevant sessions during April.

LECTIONARY BIBLE STUDY – Wednesday Mornings at 10:30 a.m. and via Zoom

Join The Rev. Stanley Jenkins for discussions centered around Sunday morning Scripture lessons. <https://us02web.zoom.us/j/88617131852>

Current Event Bible Study **Wednesdays at 6:00 p.m.** – WIRED WORD – (on Zoom) with Pastor Bob each week.

NOTE – Wednesday, April 30 will be an IN PERSON gathering at a local restaurant for dinner and discussion.

If you would like more information, zoom links, materials for upcoming studies and/or events, please contact Megan! megan.higle@gmail.com cell phone: 248-320-4578

ADULT FORUM

(Sunday Mornings from 11:30 a.m. – 12:30 p.m.)

April 6

MAKE DISCIPLES. Our Lenten Multi-Generational Bible Study focuses on how we are both teacher and learners in our discipleship.

April 13

No Formal Class Today

April 20

HAPPY EASTER! No Adult Study today. Enjoy the children as they have their annual Easter Egg Hunt right after our worship service.

April 27

CARE FOR OUR CREATION Our Green Team will present the status of the many “green” incentives in our building and community: Community Garden, Recycling, Solar Panels, etc.



DEACON NOTES

Advent House Meals: Deacons met on Sunday, March 23, to prepare and serve a delicious hot meal to those in need. *Our next meal at Advent House is scheduled for Sunday, May 25, at 3:00 p.m.* Volunteers are always welcome to participate. Contact Rich Blankenship, gogreen3426@yahoo.com.

Palm Sunday breakfast, April 13, serving from 9:00 – 9:40 a.m.

Begin Holy Week with a joyful (and delicious!) celebration with your church family! A varied menu is being planned, which may include pancakes, sausage, egg casseroles, pastries, fruit and juice. **Worship will begin at 10:00, so please arrive early enough to finish eating (and to allow your faithful cooks and helpers to be able to get to worship as well!) We will stop serving food at 9:40! (There may be leftovers you can grab after worship...)**

Deacons invite everyone to join us in an Earth Day grounds clean up:

Saturday, April 26, 10:00 - 12 noon. We'll start with our **FPC grounds and garden** and if we have enough people, we'll go out into our immediate neighborhood as well! Meet at the Church at 10:00 a.m. and **wear your FPC t-shirt!**

Sleep in Heavenly Peace – Volunteer Opportunity

Sleep in Heavenly Peace (SHP) in Haslett is part of a national organization that builds beds for kids in need. Their mission of “NO KID SLEEPS ON THE FLOOR IN OUR TOWN!” extends to building communities, transforming lives, and creating opportunities for personal growth and learning. Every bed built demonstrates the power of service and the incredible potential that emerges when people come together with a shared purpose. You can be part of this powerful movement! Go to <https://shpbeds.org/chapter/mi-lansing/> to see their build and delivery schedules (and to sign up to help!), how to apply for a bed, and how to donate twin size bedding items (which are included with every bed delivered!).

Member Care: Deacons visit and contact our shut-ins regularly, to represent our entire church, showing the constant love of our Christian family of faith. If you know someone who would appreciate these visits, contact Bessie Roper bessieroper@gmail.com.

Our “Bingo!” outreach ministry with the residents of South Washington Street Retirement Apartments continues! This important social engagement ministry **meets on the 3rd Tuesday of each month at 7:00 p.m.** – this month on **April 15.** Please help support this ministry by donating prizes, such as:

- \$25 grocery store gift cards from Meijer/Kroger
- personal care items like soap, lotions, toothpaste and toilet paper
- cleaning supplies, like laundry or dish soap
- food, like healthy snacks, ready-to-eat soups, spaghetti and sauce, cereal

Contact Lynda Snyder at lsnyder3@comcast.net with any questions.

Summer Camp Registration at Camp Greenwood is in full swing for all summer sessions, mid-June through July! A Volunteer Work Day is scheduled for April 19. For more information and to register, visit the [Camp Greenwood website \(campgreenwood.org\)](http://campgreenwood.org).

Food Pantry: The Food Pantry is always in need of basic food items and monetary donations. Contact Jim Donaldson for more details: jimdonaldsn01@comcast.net.

Basic items the pantry can always use include:

- Any type of cereal
- Jelly (grape or strawberry)
- Peanut butter
- Canned green beans, peas, and corn
- Canned peaches and mixed fruit
- Cans of baked beans
- Saltine crackers
- Baking mix
- Spaghetti noodles
- Pasta sauce
- Store bought cookies
- Spaghettios or Ravioli
- Mac and cheese
- Tomato soup
- Chicken noodle soup
- Bar soap
- Toothpaste
- Dish soap
- Laundry detergent
- Toilet paper
- Reusable bags with handles

Help us to continue to serve our community with a monthly gift to the Deacons Fund!

Designate which ministry you wish to support! The **Deacons General Fund** supports Member Care, Outreach, Bingo, Angel Team, Advent House meals, and the Pastor’s Discretionary Fund. Donations marked for “**Food Pantry**” directly support this food ministry. Donations marked for “**Holiday Baskets**” help fund the Thanksgiving and

Christmas baskets/meals. If a donation category isn't specified on the envelope or on your check, donations will go into the General Fund.



First Pres Finances in Brief As of February 28, 2025

This page is a new feature planned for the *First Epistle* to share a monthly snapshot of church finances. We want the First Pres family to understand our resources, our priorities, and our progress over time.

February notes: God is good! We've seen many pledges come in, and the spending gap has largely closed after January heating system repairs. The General Fund balance is positive, though we still have a large budget deficit to overcome for the year ahead. While we know we can count on the faith and generosity of our church family beyond pledges, we do not include non-pledge donations in the budget.

First Pres Finance Committee

Bill Collins (chair); Bev Bockes (treasurer); Mike Carey; Jim Donaldson; Jim LeTourneau

Year to Date General Fund Activity

	<i>Cash Flow YTD</i>	<i>Budgeted YTD</i>	<i>Difference vs. Budget</i>
General Fund Income	\$79,513.90	\$73,786.48	\$5,727.42
General Fund Spending	\$85,477.31	\$88,562.92	- \$3,085.61
General Fund Net (Income minus Spending)	-\$5,963.41		

For 2025 the church operates with a deficit budget (budgeted spending is larger than budgeted income). Annual pledges have decreased while annual expenses have increased. We rely on gifts and income beyond pledges to help close the gap. The Session continues to look for ways to reduce future expenses while maintaining our church and mission.

January Balances

<i>Balances</i>	
General Fund Balance	\$5,414.99
Designated Funds Balance	\$169,920.51
Endowment Fund Balance	\$2,100,178.14

(12/31/24) The Endowment Fund balance is reported quarterly.

January Campaign Progress

Progress

General Fund Pledges Received	\$57,494.14	<i>toward total pledges of \$295,732.</i>
Capital Campaign Progress	\$7,840.00	<i>toward goal of \$100,000.</i>
JLGLM Pledge Progress	\$80,620.61	<i>toward pledge of \$100,000.</i>

General Fund Income: includes things like annual pledges, weekly offerings, building use and rent income.

General Fund Spending: includes staff payroll, physical operations, repairs and utilities, mission giving, and other budgeted expenses.

Designated Funds: include money that may only be used for specific purposes, like the Deacons Fund, the Food Pantry, special music programming, memorial funds, etc.

The Endowment Fund: is managed to maintain a capital amount of \$2.1M that is invested and cannot be spent. Endowment earnings over and above the capital contribute to both the General Fund and various Designated Funds.

The Capital Campaign: was established to fund specific improvements to the sanctuary, the chapel, and other building needs that are not funded by the general budget or grants.

The JLGLM Pledge: was made by the church to the Justice League of Greater Lansing MI to contribute voluntary reparations for the benefit of Lansing’s African American community.

SESSION NOTES

The Personnel Committee is beginning the search process to replace church administrator Betsy Calvert. She will be leaving her position on May 1.

The Session met on March 19. There was an open discussion about Sunday morning worship attendance. The membership committee recommends focusing on one-to-one contact with new and existing attendees. There was discussion about reaching out to groups that use the church and upholding a kind atmosphere in the building, both during and apart from services. The format and length of worship services, fellowship time, and how we use Litten Hall and GIL classroom for fellowship were discussed. Specific questions and suggestions were forwarded to the Worship and Adult Education committees.



MISSION AND SOCIAL JUSTICE NOTES

ONE GREAT HOUR OF SHARING (OGHS)

Restoring Hope, Feeding Hungry, Empowering Oppressed



OGHS Special Offering will be dedicated on Palm Sunday, April 13.

During Lent, we celebrate that God connects with us through Jesus' resurrection and connects us with "those who have least" – that's how Matthew 25 puts it – and that's what One Great Hour of Sharing is all about. Your gifts to OGHS are shared with the ministries of the Presbyterian Hunger Program, Self-Development of People and Presbyterian Disaster Assistance.

PURCHASE FAIR TRADE COFFEE, TEAS, CHOCOLATE, AND OLIVE OIL

PRESBYTERIAN COFFEE PROJECT

As you enjoy delicious fairly traded coffee, chocolate, tea and snacks, you join the Presbyterian Church (USA) and Equal Exchange in creating a more just and green food system.

Equal Exchange's Guiding Principles:



- Trade directly with democratically organized small farmer co-operatives
- Provide producers with advance credit for crop production
- Pay producers a guaranteed minimum price that provides a stable source of income as well as improved social services
- Provide high-quality food products
- Support sustainable farming practices
- Develop more environmentally sound business practices

Equal Exchange currently works with small farmer organizations in Africa, Asia, Latin America and the United States. Trading partners are small farmer co-operatives – businesses owned and governed democratically by the farmers themselves. Decisions are made within the co-op, on their terms.

Contact Carol Wallace, cwallace145@sbcglobal.net, to buy Fair Trade coffee, tea, chocolate, cashews, and olive oil. Watch for sale table in Litten Hall.

Earth Care Congregation

The church Green Team completed the application in January for our church to be an official Earth Care Congregation. The team will continue to strive in worship, education, facilities and outreach actions to build stronger environmental stewardship.





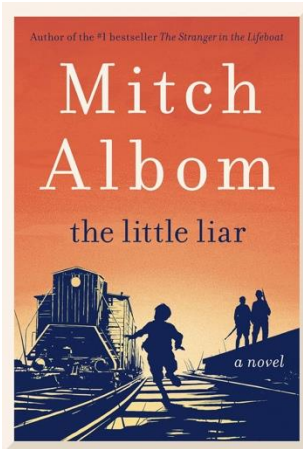
Book Group



For the next six months, the book group will be meeting in the parlor. Let Pat Eenigenburg know if you would like to be added to the book group. You can reach her at (eenigenburg@hotmail.com).

Tuesday, April 1, 6:30 p.m. in the parlor

***The Little Liar* by Mitch Albom**



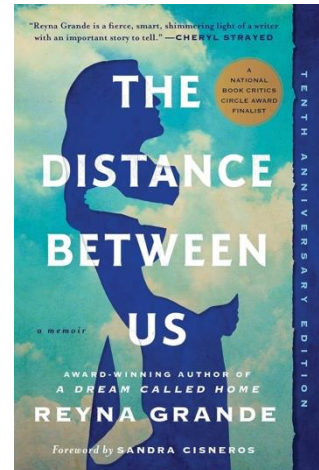
Eleven-year-old Nico Krispis has never told a lie. When the Nazis invade his home in Salonika, Greece, the trustworthy boy is discovered by a German officer, who offers him a chance to save his family. All Nico has to do is persuade his fellow Jewish residents to board trains heading “north,” where new jobs and safety await. Unaware that this is all a cruel ruse, the innocent boy reassures passengers on the station platform every day. But when the final train is loaded, Nico sees his family being herded into a boxcar. Only then does he discover that he has helped send them—and everyone he knows and loves—to their doom at Auschwitz. Nico escapes—but he never tells the truth again.

In *The Little Liar*, Mitch Albom examines the human repercussions of deception by interweaving the stories of Nico, who yearns for forgiveness; his older brother, Sebastian, who vows revenge against him; Fannie, the girl who must choose between them; and Udo Graf, the Nazi officer who forever changed their lives with his lies. Discussion led by Linda Diepenhorst.

Tuesday May 6, 7:00 in the parlor

***The Distance Between Us* by Reyna Grande**

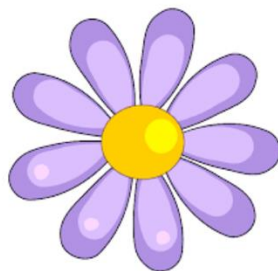
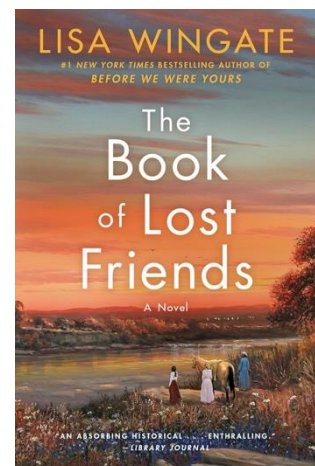
In this inspirational and unflinchingly honest memoir, Reyna Grande describes her childhood torn between the United States and Mexico, and shines a light on the experiences, fears, and hopes of those who choose to make the harrowing journey across the border. As her parents make the dangerous trek across the Mexican border in pursuit of the American dream, Reyna and her siblings are forced into the already overburdened household of their stern grandmother. When their mother at last returns, Reyna prepares for her own journey north to live with the man who has haunted her imagination for years, her long-absent father. Funny, heartbreaking, and lyrical, *The Distance Between Us* poignantly captures the confusion and contradictions of childhood, reminding us that the joys and sorrows we experience are imprinted on the heart forever, calling out to us of those places we first called home. Discussion led by Jean Fellows.



Tuesday June 3, 7:00 in the parlor

***The Book of Lost Friends* by Lisa Wingate**

Louisiana, 1875: In the tumultuous era of Reconstruction, three young women set off as unwilling companions on a perilous quest: Hannie, a freed slave; Lavinia, the pampered heir to a now destitute plantation; and Juneau Jane, Lavinia's Creole half-sister. Each carries private wounds and powerful secrets as they head for Texas, following roads rife with vigilantes and soldiers still fighting a war lost a decade before. For Lavinia and Juneau Jane, the journey is one of stolen inheritance and financial desperation, but for Hannie, torn from her mother and siblings before slavery's end, the pilgrimage west reignites an agonizing question: Could her long-lost family still be out there? Beyond the swamps lie the limitless frontiers of Texas and, improbably, hope. Discussion led by Victoria Fitton.



The MAY newsletter deadline is APRIL 15th.
Please send articles to Victoria: vafitton@gmail.com

FIRST CHURCH STAFF

Pastor: Rev. Stanley Jenkins

Parish Associate: Rev. Charles Herrick

Pastoral Care Assistant: Christine DeYonke

Church Administrator: Betsy Calvert

Director of Congregational Life &

Outreach: Prince Solace

Director of Christian Education &

Youth Ministry: Megan Hagle

Part-time Custodian: Kliff Nhengu

Director of Music: Megan Hagle

Organist: Sergei Kvitko

Bell Choir Director: Darin Showalter

Childcare Staff: Lily Ferris

Video Producers: Bill Collins and
Andrew Mackoul

CHURCH FAMILY

CONCERNS OF THE CONGREGATION:

In care facilities:

Jean Dietrich (Story Point of Grand Ledge)

Dianne Rector (Rosewood Manor in DeWitt)



Shelia Conrad's son, John, died very suddenly of a heart attack while on spring break vacation with his family in Montana. John grew up in our church and is well known by many of us. He and his family live near Shelia in Elk Rapids. There will be visitations on Monday, March 31, from 4:00 - 8:00 p.m. and Tuesday, April 1, from 10:00 - 11:00 a.m. The funeral service will be held on April 1, at 11:00 a.m. Both the visitations and the funeral will be held at the First Presbyterian Church, 404 Spruce Street, Elk Rapids, Michigan. You can view John's obituary at reynolds-jonkhoff.com.


CHRIST THE LORD
IS RISEN TODAY!

APRIL BIRTHDAYS

04/02 Steve Roosa
04/02 Shirley Herrick
04/02 Jeff Keller
04/05 Chuck Gebhardt
04/08 Bobbie Banghart
04/08 Austin Hughes
04/09 Greg Botting
04/10 Helen Hansens
04/11 Daniel Fisher
04/11 Carrie Blair
04/14 David Davies
04/14 Judah Layne
04/14 Matthew Foster

04/17 Liam Friess
04/18 Caleb Layne
04/19 Betsy Calvert
04/22 Veronica LeTourneau
04/25 Amy Willing
04/27 Amy Cunningham
04/27 Bassam Makhoul
04/27 Elda Keaton
04/28 Quintyn Harrison
04/29 Jameson Drake
04/29 Will Bales
04/30 Sergei Kvito
04/30 William Rude

APRIL CHURCH CALENDAR

<p>Tuesday, April 1 9:00 a.m.-2:00 p.m. GIL Classes 9:00 a.m.-4:00 p.m. AARP Tax Assistance 4:00 p.m. Adult Forum Committee 5:30 p.m.-6:30 Yoga – Yoga Room 6:30-9:00 p.m. Glen Erin Pipe Band 6:30 p.m. Book Group – Parlor 7:00 p.m. Capital City Chordsmen</p> <p>Wednesday, April 2 9:00 a.m.-2:00 p.m. GIL Classes 9:00 a.m. Youth Volunteers 10:30 a.m. Lectionary Bible Study 4:30 p.m. Lansing Children Choir 5:30 p.m.-6:30 Yoga – Yoga Room 6:00 p.m. Mid-MI Photo Club 6:00 p.m. Wired Word Bible– Zoom 6:30 p.m. Mission Committee</p> <p>Thursday, April 3 9:00 a.m.-2:00 p.m. GIL Classes 10:30 a.m. Library Committee – 7:00 p.m. Chancel Choir Rehearsal 7:00 p.m. Victory in Jesus Bible Study</p> <p>Friday, April 4 5:30-6:30 p.m. Yoga – Yoga Room</p> <p>Saturday, April 5 7:00 p.m. Pantry Concert – St. John’s Episcopal</p> <p>Sunday, April 6 10:00 a.m. Morning Worship 12:00 a.m. Christian Education 12:30 p.m. Victory in Jesus Ministries</p> <p>Monday, April 7 9:00 a.m.-2:00 p.m. GIL Classes</p>	<p>Thursday, April 10 9:00 a.m.-2:00 p.m. GIL Classes 10:00 a.m.-2:30 p.m. NWI Food Distribution 7:00 p.m. Chancel Choir rehearsal 7:00 p.m. Victory in Jesus Bible Study</p> <p>Friday, April 11 5:30-6:30 p.m. Yoga – Yoga Room</p> <p>Saturday, April 12 10:00 a.m. Deacon Breakfast Setup</p> <p>Sunday, April 13 Palm Sunday 9:00 a.m. Palm Sunday Breakfast 10:00 a.m. Morning Worship 11:30 a.m. Christian Education 11:30 a.m. Finance Committee 12:30 p.m. Victory in Jesus Ministries</p> <p>Monday, April 14 9:00 a.m.-2:00 p.m. GIL Classes 9:00 a.m.-4:00 p.m. AARP Tax Assistance 10:00 a.m. Staff Meeting 6:30 p.m. Bells of First Rehearsal 7:00 p.m. Verna Holly Rehearsal 7:00 p.m. GL Moms Demand Action</p> <p>Tuesday, April 15 9:00 a.m.-2:00 p.m. GIL Classes 9:00 a.m.-4:00 p.m. AARP Tax Assistance 1:00 p.m. Adult Ed Committee 6:00 p.m. GIL Classes 6:00 p.m. Mid MI Photo Officers 6:30-9:00 p.m. Glen Erin Pipe Band 7:00 p.m. Capital City Chordsman</p> <p>Wednesday, April 16 9:00 a.m.-5:00 p.m. GIL Classes 9:00 a.m. Youth Volunteers</p>
---	--

9:00 a.m.-4:00 p.m. 10:00 a.m. 6:30 p.m. 7:00 p.m.	AARP Tax Assistance Staff Meeting Bells of First Rehearsal Membership Committee	10:30 a.m. 12:00 p.m. 4:30-6:30 p.m. 5:30-6:30 p.m. 6:00 p.m. 7:00 p.m.	Lectionary Bible Study Boomers/Beyond Lunch Lansing Children's Choir Yoga – Yoga Room Wired Word Bible– Zoom Session Meeting
Tuesday, April 8 9:00 a.m.-2:00 p.m. 9:00 a.m.-4:00 p.m. 2:30 p.m. 5:30-6:30 p.m. 5:30 p.m. 6:30-9:00 p.m. 7:00 p.m.	GIL Classes AARP Tax Assistance Building & Grounds Yoga – Yoga Room Worship Committee Glen Erin Pipe Band Capital City Chordsmen	Thursday, April 17 9:00 a.m.-5:00 p.m. 7:00 p.m.	Maundy Thursday GIL Classes Maundy Thursday Service
Wednesday, April 9 9:00 a.m.-2:00 p.m. 9:00 a.m. 10:30 a.m. 4:30 p.m. 5:30-6:30 p.m. 6:00 p.m. 7:00 p.m.	GIL Classes Youth Volunteers Lectionary Bible Study Lansing Children's Choir Yoga – Yoga Room Wired Word Bible– Zoom Deacons Meeting	Friday, April 18 5:30-6:30 p.m. 7:00 p.m.	Good Friday Yoga – Yoga Room Good Friday Service
Monday, April 21 9:00 a.m.-2:00 p.m. 10:00 a.m. 6:30 p.m. 7:00 p.m.	GIL Classes Staff Meeting Bells of First Rehearsal Verna Holly Project Concert	Sunday, April 20 10:00 a.m. 12:00 a.m. 12:30 p.m.	Easter Sunday Morning Worship Christian Education Victory in Jesus Ministries
Tuesday, April 22 9:00 a.m.-2:00 p.m. 5:30-6:30 p.m. 6:30-9:00 p.m. 7:00 p.m.	GIL Classes Yoga – Yoga Room Glen Erin Pipe Band Capital City Chordsmen	Friday, April 25 5:30-6:30 p.m.	Yoga – Yoga Room
Wednesday, April 23 9:00 a.m.-2:00 p.m. 9:00 a.m. 10:30 a.m. 4:30-6:30 p.m. 5:30-6:30 p.m. 6:00 p.m.	GIL Classes Youth Volunteers Lectionary Bible Study Lansing Children's Choir Yoga – Yoga Room Wired Word Bible– Zoom	Saturday, April 26 9:00 a.m.	Larissa Clark Recital
Thursday, April 24 9:00 a.m.-2:00 p.m. 10:00 a.m.-2:30 p.m. 1:00 p.m. 7:00 p.m. 7:00 p.m.	GIL Classes NWI Food Distribution Bridge in the Parlor Chancel Choir Rehearsal Victory in Jesus Ministries	Sunday, April 27 10:00 a.m. 12:00 a.m. 12:30 p.m.	Morning Worship Christian Education Victory in Jesus Ministries
		Monday, April 28 9:00 a.m.-2:00 p.m. 10:00 a.m. 6:30 p.m.	GIL Classes Staff Meeting Bells of First Rehearsal
		Tuesday, April 29 9:00 a.m.-2:00 p.m. 5:30-6:30 p.m. 6:30-9:00 p.m. 7:00 p.m.	GIL Classes Yoga – Yoga Room Glen Erin Pipe Band Capital City Chordsmen
		Wednesday, April 30 9:00 a.m.-2:00 p.m. 9:00 a.m. 10:30 a.m. 4:30-6:30 p.m. 5:30-6:30 p.m. 6:00 p.m.	GIL Classes Youth Volunteers Lectionary Bible Study Lansing Children's Choir Yoga – Yoga Room Wired Word Bible– Zoom