



## *The First Epistle* Worship, Serve, Grow February 2025



Newsletter of the First Presbyterian Church  
510 W. Ottawa St., Lansing, MI 48933  
Office phone: 517-482-0668

Sunday Worship: 10:00 a.m.  
Website: <http://lansingfirstpres.com>

Office hours: 8:00 a.m. – 12:00 p.m. & 1:00 – 4:00 p.m.  
Facebook: <https://www.facebook.com/LansingFirstPresbyterian>



**COMMUNION WILL BE SERVED ON FEBRUARY 2<sup>ND</sup>**

### **BIRTHDAY POTLUCK – February 2 After Worship**

Birthday Potluck is February 2, 2025, after worship. Come find out who celebrates a birthday in the same month you do. Bring a dish to pass that feeds 10-12 people. Enjoy great food, good conversation, and a birthday party.

### **BOOMERS & BEYOND – Wednesday, February 19 at Noon**

Our January luncheon on the 15th, was on a very cold day, but our tables were almost full. Thank you to those who came and braved the elements. We also know some people are either unable to get out or may be gone during the winter months. We appreciate your attendance whenever it works for you to come.

Looking ahead at the next few months our luncheon schedule is as follows:

**Wednesday, February 19 at Noon in the Parlor**

**Wednesday, March 19 at Noon in the Parlor**

**Wednesday, April 16 at Noon in the Parlor**

Please mark your calendars for the above dates. We will continue to announce reminders at church or in the Epistle. Let us know if you need transportation and we will try to arrange it if possible. If any of our regular attendees can pick up anyone please reach out to others or let us know.

Stay warm and we look forward to our next time together.  
Kathe Smith, 517-230-1814, and Bev Phillips, 517-927-8367.

### **TLC – Thursday, February 20 at 1:00 p.m.**

TLC will meet on Thursday, February 20th at 1:00 PM. This month we will be going to Leo's Coney Island. It is located at 2520 E. Jolly Rd. in Lansing. Please call Judy Hartgerink (517-484-5177) for reservations or information. TLC is a group for women in the church who enjoy fellowship and good food. We would love to have you join us!

## Pastor's Corner

Adult Education	7-8
Bass Section Leader	3
Birthdays	14
Birthday Potluck	1
Book Group	5-6
Boomers & Beyond	1
Church Calendar	15-16
Church Family	14
Church Staff	13
Deacons Notes	10-12
Eastside Link	9
Faith Formation	9
Mission & Social Justice	12-13
Music Notes	4
Pastor's Corner	2-3
Session Notes	6
Talent Show	6
TLC	1

As you all know, last year we received a \$500,000 grant from the state of Michigan primarily for infrastructure. For the purposes of the grant, we are considered a “community center.” That doesn’t mean, of course, that we aren’t first and foremost a worshipping community, but rather recognizes our call to serve our community beyond ourselves.

It also means that we are restricted in how we can use the funds. This isn’t money given for us—but entrusted to us, on behalf of the community.

At our last meeting Session approved a proposed use of the funds, subject to the creation of a formal agreement with the state.

\*\*\*\$76,500, under the heading of “sustainability,” is set aside for solar panels, to help cut the costs of running our building, but also as part of our civic responsibility to be good stewards of the environment.

\*\*\*\$138,600, under the heading “accessibility,” will be used to upgrade the doors at the Molly Grove entrance so they can open automatically, dramatically making the loading of food from trucks easier (and warmer in the winter) for the Food Pantry. That figure will also be used to update building security and rehab our aging elevator (which is crucial to the operations of the Food Pantry).

\*\*\*\$16,150, will be used to provide general office equipment and school related items for two community-based organizations that share our space, the Global Institute of Lansing and Northwest Initiative. Both organizations are vital to our community.

\*\*\*268,750 will be used to upgrade our kitchen to professional quality. This figure includes permitting costs. The vision is to work with other organizations to create an incubator kitchen program, in which our kitchen would be used to help new business start-ups, such as a food truck, or a catering

business. We would partner with other organizations that could help provide the education and support that new business owners would need to succeed.

To be honest with you, this is the project that is most exciting to me. The other projects represent the ability to continue to maintain our building so that it can continue to be a community asset—but this kitchen project represents a whole new way that we can serve!

As you will recall, we are a Matthew 25 congregation, which means we have committed to three core pillars: dismantling structural racism, eliminating systemic poverty, and building congregational vitality. What has always inspired me about this program is that it explicitly links congregational vitality to actively seeking to build the Beloved Community, to helping shape our environment in the image of the Kingdom of God. Church vitality means not only an outward focus, but confidence that we are called to be the body of Christ in the world, continuing Jesus' ministry of liberation, reconciliation, and transformation.

Not only will we engage in the feeding of souls, through worship and witness, the feeding of bodies, through our food pantry, but also help build ladders out of poverty by helping to create jobs!

“Faith without works is dead,” we read in the book of James. With this grant we have been given an amazing opportunity to further bring our faith into action—but also fully alive in the risen Christ. God is good!

## **FPC Chancel Choir Welcomes Joey Baunoch as Bass Section Leader!**



Joey is a freshman Vocal Performance major studying his first year at Michigan State University. This spring, he is excited to sing in the opera chorus for MSU's production of *La Cenerentola*. When he is not singing, Joey enjoys pursuing hobbies such as video games, Dungeons and Dragons, and music composition.

**Fun Fact!** Joey's dad, Joe Baunoch, sang Bass in the FPC Chancel Choir while attending Michigan State University about 15 (or so) years ago! Welcome Joey.

## MUSIC NOTES with Megan



*I have trusted in Thy mercy;  
My heart shall rejoice, my heart shall rejoice.  
I will rejoice in Thy salvation.  
I will sing unto the Lord, for He hath dealt  
bountifully with me.*

-from "Trust in the Lord" by Rollo Dilworth  
Text from Psalm 13:5-6 and Proverbs 3:5-6

<https://youtu.be/-yG4MNT6DtE?si=wz05BUFquwUSpO3r>

How often do we decide that we know better than God? How often do we question the bountiful gifts that our God has given to us?

The Psalmist says "I trust your love, and I feel like celebrating because you rescued me. You have been good to me, Lord, and I will sing about you."

How often do you sing praises to God? How often do you celebrate the goodness in your life?

As we journey through the season of Epiphany (LIGHT), my hope for our congregation is: that we journey in the light of God's love. That we journey in the light of God's promise. That we journey in the warmth of God's presence. God's love, light and presence is WITH US through our church family. Let Us Rejoice!

The music staff at First Presbyterian hopes you find avenues for meditation, joyful celebration or prayer with our musical selections; in anthems, hymns and service music; during the month of February.

### Hymns for February to include:

726 Will You Come and Follow Me	1 Holy, Holy, Holy! Lord, God Almighty
69 I, The Lord of Sea and Sky	247 Now the Green Blade Riseth
353 My Hope Is Built on Nothing Less	819 Be Still My Soul

### Choral Anthems in February to include:

"Gift of Love" arr Hal H. Hopson  
"Amazing Grace" arr John Coates, Jr.  
"Deep Waters" by Pepper Choplin  
"All That Have Life and Breath Praise Ye the Lord" by Rene Clausen  
"Trust In the Lord" by Rollo Dilworth

We also look forward to a musical gift from Bells of First!

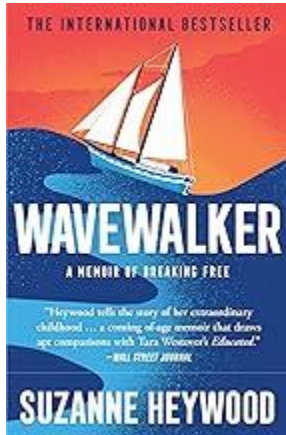
# Book Group



Prior to each meeting, the Zoom login link will be sent to the names on the book group email list. Let Pat Eenigenburg know if you would like to be added. You can reach her at (eenigenburg@hotmail.com).

**Tuesday, February 4, 7:00 p.m. on Zoom**

## ***Wavewalker: A Memoir of Breaking Free* by Suzanne Heywood**



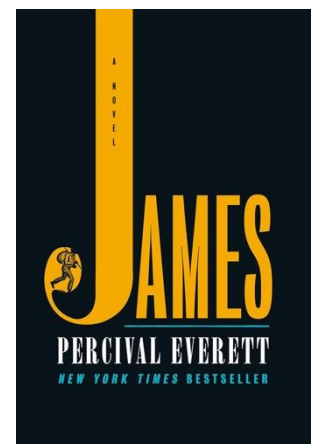
Aged just seven, Suzanne Heywood set sail with her parents and brother on a three-year voyage around the world. What followed turned instead into a decade-long way of life, through storms, shipwrecks, reefs and isolation, with little formal schooling. No one else knew where they were most of the time and no state showed any interest in what was happening to the children. Suzanne fought her parents, longing to return to England and to education and stability. This memoir covers her astonishing upbringing, a survival story of a child deprived of safety, friendships, and schooling. At seventeen Suzanne earned an interview at Oxford University and returned to the UK.

*Wavewalker* is the incredible true story of how the adventure of a lifetime became one child's worst nightmare – and how her determination to educate herself enabled her to escape. Discussion led by Jean Fellows.

**Tuesday, March 4, 7:00 p.m. on Zoom**

## ***James* by Percival Everett**

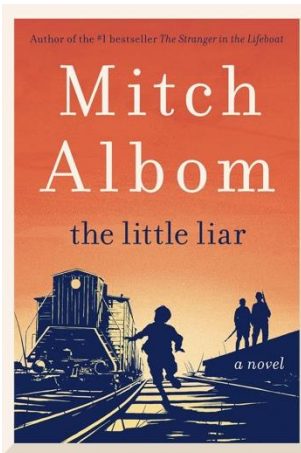
When the enslaved Jim overhears that he is about to be sold to a man in New Orleans, separated from his wife and daughter forever, he decides to hide on nearby Jackson Island until he can formulate a plan. Meanwhile, Huck Finn has faked his own death to escape his violent father, recently returned to town. As all readers of American literature know, thus begins the dangerous journey by raft down the Mississippi River toward the elusive and too-often-unreliable promise of the Free States and beyond. While many narrative set pieces of *The Adventures of Huckleberry Finn* remain in place (floods and storms, stumbling across both unexpected death and unexpected treasure in the myriad stopping points along the river's banks, encountering the scam artists posing as the Duke and Dauphin...), Jim's agency, intelligence and compassion are shown in a radically new light. Discussion led by Doris Drake.





**Tuesday, April 1, 7:00 p.m. on Zoom**

## ***The Little Liar* by Mitch Albom**



Eleven-year-old Nico Krispis has never told a lie. When the Nazis invade his home in Salonika, Greece, the trustworthy boy is discovered by a German officer, who offers him a chance to save his family. All Nico has to do is persuade his fellow Jewish residents to board trains heading “north,” where new jobs and safety await. Unaware that this is all a cruel ruse, the innocent boy reassures passengers on the station platform every day. But when the final train is loaded, Nico sees his family being herded into a boxcar. Only then does he discover that he has helped send them—and everyone he knows and loves—to their doom at Auschwitz. Nico escapes—but he never tells the truth again.

In *The Little Liar*, Mitch Albom examines the human repercussions of deception by interweaving the stories of Nico, who yearns for forgiveness; his older brother, Sebastian, who vows revenge against him; Fannie, the girl who must choose between them; and Udo Graf, the Nazi officer who forever changed their lives with his lies. Discussion led by Linda Diepenhorst.

## **TALENT SHOW – Saturday, March 8<sup>th</sup> at 3:00 p.m.**

Show off your talent by yourself or with a group. A talent show will take place on Saturday, March 8, 2025, at 3:00 pm. If you want to be in the show, please contact Pam Blair at; [blairkids3@yahoo.com](mailto:blairkids3@yahoo.com). The show needs an audience too, so if you are not in the show come to be wowed and enjoy the fun.

## **SESSION NOTES**

The Session and Deacons met for their annual joint potluck meeting. Homebound communion was discussed. The groups then met separately. The Board of Trustees officers for 2025 are Bill Collins, president; Beverley Bockes, treasurer; Carol Wallace, clerk and secretary. Finance committee report included a motion to use \$19,000 of saved endowment funds (rainy day fund) to pay off the end of year deficit and start the new year without a deficit. The 2025 budget is being tweaked but looks like about a \$90,000 deficit. This budget includes staff increases since none were given last year. Northwest Initiative rent increase helps to boost income, but pledges are less than last year.

A meeting will be held after church on January 26 to discuss building improvements.

The Session also approved Earth Care pledge so church can apply to be an official PCUSA Earth Care congregation.

# ADULT EDUCATION

We have different ways for you to engage in educational opportunities at Lansing First Presbyterian. Here is what is happening during the month of February!

## ADULT FORUM

(Sunday Mornings from 11:30 a.m. – 12:30 p.m.)

### February 2

**No Christian Education** – Join us in Litten Hall for a Birthday Potluck! Bring a dish to pass (note - birthday cake will be provided).

*Wired Word packets will be available! Ceci Anderson and Pastor Bob Higle will be able to answer any questions you may have.*

### February 9

**Adult Forum** – "The Journey Home (part 1)"

Join Elder Willye Bryan as she shares her recent travels to discover her ancestors in Cameroon.

### February 16

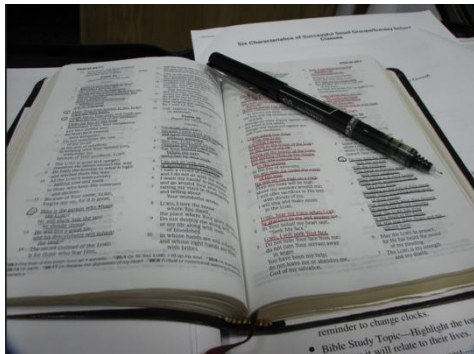
**Adult Forum** – "Justice League of Greater Lansing Michigan"

Hear about upcoming events, recent successes, and First Pres' involvement in Repairing the Breach. Led by Prince Solace, Willye Bryan and The Rev. Stanley Jenkins.

### February 23

**Adult Forum** – "The Journey Home (part 2)"

Join Elder Willye Bryan as she continues her story of travels to discover her ancestors in Cameroon.



## LECTIONARY BIBLE STUDY

**Wednesday Mornings at 10:30 a.m. and via Zoom**

Join The Rev. Stanley Jenkins for discussions centered around Sunday morning Scripture lessons.

<https://us02web.zoom.us/j/88617131852>

[This Photo](#) by Unknown Author is licensed under [CC BY](#)



### Wednesday Evenings at 6:00 p.m.

Adult Education is starting a new curriculum titled, “The Wired Word.” Join Pastor Bob Higle to discuss current events through a Biblical lens. It will spark stimulating discussions and conversations germane to current events.

#### This is how it will work:

- Weekly emails with two current topics, links for biblical verses, and more information on the topics.
- Weekly zoom discussions on these topics Wednesday (except the last Wednesday of the month) at 6:00 p.m.
- Once a month (the last Wednesday of the month) there will be an in-person gathering/discussion at a restaurant for fellowship.

#### Schedule of Events:

February 1, 8, 15, 22 – Materials will be sent by email.

February 5, 12, 19 – Meetings by zoom at 6:00 p.m.

February 26 – Meeting in person at a local restaurant at 6:00 p.m. for discussion and fellowship. Invite a friend! Place TBD.

March 1, 8, 15, 22, 29 – Materials will be sent by email.

March 5, 12, 19 – Meetings by zoom at 6:00 p.m.

March 26 – Meeting in person at a local restaurant at 6:00 p.m. for discussion and fellowship. Invite a friend! Place TBD.

<https://us02web.zoom.us/j/88970516558>

If you would like more information, zoom links, materials for upcoming studies and/or events, please contact Megan! [megan.higle@gmail.com](mailto:megan.higle@gmail.com) cell phone: 248-320-4578



### LENTEN CROSS-GENERATIONAL BIBLE STUDY

**Mark your calendars** for our Lenten Cross-Generational Bible Study starting on Sunday, March 9. Adults and Youth/Children will all be using “Follow Me: Biblical Practices for Faithful Living” (PCUSA). We will explore what it means MAKE DISCIPLES (led by the members of the Adult and Youth Education committees: Ceci Anderson, Alyse Collins, The Rev. Stan Jenkins, Pastor Bob Higle, Megan Higle, Pam Blair, and Kathy Banghart).



## EASTSIDE LINK BRUNCH

The Eastside LINK members will have brunch on Sunday, February 23, 2025, at 12:30 pm. We'll meet at Blondie's Barn, 5640 Marsh Rd. (The restaurant is behind the gas station) at the corner Haslett Rd. and Marsh Rd. In Haslett. There is a special church meeting right after the service, but I believe we will still be able to make it to the brunch. Please call Kathe Smith at 517-230-1814 to reserve a spot at the table. Hope to see you there!



## Faith Formation at First Presbyterian Church

Here is what is going during the month of February for Faith Formation!

### CHILDREN, YOUTH & ADULTS!

#### *4 years – 12 years Age Children!*

Sunday Morning Faith Formation!

- Feb 2 – church potluck & story time with Ms. Megan
- Feb 9 – “Trust in God’s Promises” Kathy B (teacher)
- Feb 16 – “One Step at A Time” Alyse C (teacher)
- Feb 23 – “Appreciate God’s Creation” Pam B (teacher)



#### *Youth (Middle and Senior High)!*

Our Middle and Senior High Faith Formation continues our fellowship with Holt and Okemos Presbyterian churches this winter. These groups come together every Sunday evening (September – May). We are so glad that our young people have ways to share their faith with others in our larger community!

Middle and High School Youth Groups will be attending their winter retreat!

*If you have a student in grades 6 – 12*, see Megan Hagle or Pam Blair to find out what opportunities exist. ☺

If Youth Group is not “your thing,” please see Megan Hagle, Pam Blair, or Alyse Collins for a schedule of youth Bible Study and opportunities for service within our congregation.



# DEACON NOTES

## OUTREACH MINISTRY: FPC DEACONS CARING FOR OUR COMMUNITY

**Advent House Meals:** A delicious hot meal was served to the Advent House community on January 26. The next Advent House meal will be served on March 23. If you would like to help with this



(preparing the meal or serving it), please contact Rich Blankenship: [gogreen3426@yahoo.com](mailto:gogreen3426@yahoo.com)

## CAMP GREENWOOD – Registration for summer camps now open!



A new year means a new summer season at Camp Greenwood! Start thinking now about Summer Camp Registration and take advantage of the 5% discount if registered in

the month of February. Registration opened January 1 for all summer sessions and spring events. To register, to apply for a Camp Greenwood scholarship, or for more information, visit the Camp Greenwood website, [campgreenwood.org](http://campgreenwood.org), and click on the Summer Camp icon.

**Food Pantry:** The need for our Food Pantry ministry continues, year-round. The Food Pantry is always in need of basic food items and monetary donations. Contact Jim Donaldson for more details: [jimdonaldsn01@comcast.net](mailto:jimdonaldsn01@comcast.net).

Bring your non-perishable items for the pantry to the sanctuary and place them next to the Food Pantry box there, for inclusion in each Sunday's children's moment! Basic items the pantry can always use include:

- Any type of cereal
- Jelly (grape or strawberry)
- Peanut butter
- Canned green beans, peas, and corn
- Canned peaches and mixed fruit
- Cans of baked beans
- Saltine crackers
- Baking mix
- Spaghetti noodles
- Pasta sauce
- Store bought cookies
- Spaghettios or Ravioli
- Mac and cheese
- Tomato soup
- Chicken noodle soup
- Bar soap
- Toothpaste
- Dish soap
- Laundry detergent
- Toilet paper
- Reusable bags with handles

Also always helpful, financial donations, which are used to purchase needed items when they cannot be obtained through our regional Food Bank. Please be sure to mark your monetary gifts “Food Pantry.” Contact Jim Donaldson for more details: [jimdonsn01@comcast.net](mailto:jimdonsn01@comcast.net). Thank you for your generous support!

## MEMBER CARE

**Deacon “Buddies”** visit and/or contact our homebound members regularly, representing our entire church, and showing the constant love of our Christian family of faith.

**Angel Team Ministry:** The Angel Team offers rides, meals, and other support for church members in both joyous and difficult times. If you are interested in assisting your friends and church members, or have need of such support, please contact Deb Donaldson: [iampib@yahoo.com](mailto:iampib@yahoo.com). Thank you for your kindness in supporting this ministry!

## “Bingo!” Outreach Ministry: BINGO MINISTRY AT CAPITAL CITY APARTMENTS ON SOUTH WASHINGTON APARTMENTS

Join Linda Snyder, James Pyle, and Rich Blankenship in providing this entertaining outreach and fellowship to the residents at 3200 S. Washington Blvd. on the third Tuesday of the month at 7:00 p.m.

You can also support the fun by donating prizes! Bring your donations to the church office, marked “Linda Snyder - Bingo prizes.” Prize items that are always appreciated include:



- Personal care items (hand soap, lotions, toothpaste, toilet paper, paper towels)
- Cleaning supplies (dish and laundry soap)
- Granola bars and other snack foods
- \$25 gift cards from Meijer/Kroger (grand prize)

Contact Linda Snyder at [lksnyder3@comcast.net](mailto:lksnyder3@comcast.net) with your questions or to volunteer!  
*Thank you!*

## HOW TO PROVIDE FINANCIAL SUPPORT FOR THE MINISTRIES OF THE DEACONS

The ministry of your Board of Deacons is not part of the annual church budget (your pledges), but depends upon extra-mile giving by you, our generous congregation! You can help us serve our community by giving to the Deacons Funds:

- To support Member Care, Bingo Outreach, Advent House meals, and Angel Team ministries, put “Deacons General Fund” on the memo line of your check.
- To support our food outreach ministries, please indicate the desired recipient (Food Pantry or Holiday Basket).

Donations to the Deacons without a specific designation go into the Deacons General Fund. *Thank you for your support!*

## MISSION AND SOCIAL JUSTICE NOTES

### A Fair Trade Valentine's Day

Valentine's Day is a fun time to show love for your community, the environment and the farmers who grow our food. Equal Exchange chocolate and coffee make great gifts. Available in Litten Hall in February after worship.



### What is Two-Cents-a-Meal or Cents-Ability?

A strategy for raising awareness — and funds — for the fight against hunger



Cents-Ability is a small first step in the battle against hunger and poverty. Congregations invite every member — of all ages — to contribute a few cents at every meal. This simple act is an expression of thanks for what we have received. It is also a commitment to share with others in response to Jesus' command "You give them something to eat." When members bring their offerings to church on the appointed Sunday, all of those coins "make a joyful noise unto the Lord" as they are received and dedicated.

## EARTH CARE TEAM

**This is the Earth Care Pledge:**

Peace and justice are God's plan for all creation. The earth and all creation are God's. God calls us to be careful, humble stewards of this earth, and to protect and restore it for its own sake, and for the future use and enjoyment of the human family. As God offers all people the special gift of peace through Jesus Christ, and through Christ reconciles all to God, we are called to deal justly with one another and the earth.

1. Our worship and discipleship will celebrate God's grace and glory in creation and declare that God calls us to cherish, protect and restore this earth.

2. In education, we will seek learning and teaching opportunities to know and understand the threats to God’s creation and the damage already inflicted. We will encourage and support each other in finding ways of keeping and healing the creation in response to God’s call to earth-keeping, justice and community.
3. Our facilities will be managed, maintained and upgraded in a manner that respects and cherishes all creation, human and non-human, while meeting equitably the needs of all people. In our buildings and on our grounds, we will use energy efficiently, conserve resources, and share what we have in abundance so that God’s holy creation will be sustainable for all life and future generations.
4. Our outreach will encourage public policy and community involvement that protects and restores the vulnerable and degraded earth as well as oppressed and neglected people. We will be mindful that our personal and collective actions can positively or negatively affect our neighborhood, region, nation and world. We will seek to achieve environmental justice through coalitions and ecumenical partnerships.

**In 2024 the Earth Care Team worked on an application to PCUSA for our church to be designated as an Earth Care Congregation.** The designation is part of the Environmental Ministries program of the Presbyterian Hunger Program. An Environmental Audit was completed consisting of 25 points in each of 4 categories: Worship, Education, Facilities, and Outreach beyond our congregation. We are happy to report that we have met the criteria for initial approval. Our team and our congregation will have more projects to complete in 2025 to meet additional criteria. At this time the installation of solar panels has been approved as a first step to becoming more earth friendly. We will update the congregation on further projects in the future.

**The MARCH newsletter deadline is FEBRUARY 15<sup>th</sup>.  
Please send articles to Victoria: [vafitton@gmail.com](mailto:vafitton@gmail.com)**

**FIRST CHURCH STAFF**

**Pastor:** Rev. Stanley Jenkins

**Parish Associate:** Rev. Charles Herrick

**Pastoral Care Assistant:** Christine DeYonke

**Church Administrator:** Betsy Calvert

**Director of Congregational Life &**

**Outreach:** Prince Solace

**Director of Christian Education &**

**Youth Ministry:** Megan Higle

**Part-time Custodian:** Kliff Nhengu

**Director of Music:** Megan Higle

**Organist:** Sergei Kvitko

**Bell Choir Director:** Darin Showalter

**Childcare Staff:** Lily Ferris

**Video Producers:** Bill Collins and

Andrew Mackoul



# CHURCH FAMILY

## CONCERNS OF THE CONGREGATION:

In care facilities:

**Jean Dietrich** (Story Point of Grand Ledge)

**Dianne Rector** (Rosewood Manor in DeWitt)

**June Fitton** (Hospice House)



**Dan Hengstebeck**, son of Jim (JoAnn) Hengstebeck tragically died on Monday, December 23, 2024, in a single vehicle accident while driving in freezing rain. Dan leaves his beloved children, Pearson, Daphne and Thatcher, to mourn the loss of their precious father. Lord our God, we pray for Jim and his family during this time of tragedy and loss of their son, brother, and father.

## FEBRUARY BIRTHDAYS

02/02	George Bennett	02/16	Lauren Snyder
02/02	Ruth Brunet	02/17	David Snyder
02/02	Pamela Davies	02/19	LeeAnn Lorencen
02/03	Patrick Affholter	02/20	Jackie Poland
02/04	Avery Wisner	02/22	Katie Pettit
02/04	Bry Powers	02/22	Gartha Angus
02/06	Jennifer Amabo	02/22	Ceci Anderson
02/07	Brenda Poland	02/24	Jean Dietrich
02/08	Howard Powers	02/25	Elizabeth Amabo
02/09	Jane Collins	02/26	Jacob Summerfield
02/09	Roger Rochowiak	02/26	Aaron Bales
02/11	Rachel Showalter		
02/16	Kat English		



# FEBRUARY CHURCH CALENDAR

<p><b>Sunday, February 2</b>            10:00 a.m. Morning Worship            11:30 a.m. Christian Education            11:30 a.m. Birthday Potluck            12:30 p.m. Victory in Jesus Ministries</p> <p><b>Monday, February 3</b>            9:00 a.m.-2:00 p.m. GIL Classes            9:00 a.m.-4:00 p.m. AARP Tax Assistance            10:00 a.m. Staff Meeting            2:00 p.m. Christian Ed Committee            6:00 p.m. Assoc of Lansing Pastors            6:30 p.m. Bells of First Rehearsal            7:00 p.m. Membership Committee</p> <p><b>Tuesday, February 4</b>            9:00 a.m.-2:00 p.m. GIL Classes            9:00 a.m.-4:00 p.m. AARP Tax Assistance            6:30-9:00 p.m. Glen Erin Pipe Band            7:00 p.m. Capital City Chordsmen            7:00 p.m. Book Group – Zoom</p> <p><b>Wednesday, February 5</b>            9:00 a.m.-2:00 p.m. GIL Classes            10:30 a.m. Lectionary Bible Study            4:30 p.m. Lansing Children Choir            5:30 p.m.-6:30 Yoga – Yoga Room            6:00 p.m. Mid MI Photo Club Mtg            6:00 p.m. Wired Word Bible– Zoom            6:30 p.m. Mission Committee            7:00 p.m. Youth Education Comm</p> <p><b>Thursday, February 6</b>            9:00 a.m.-2:00 p.m. GIL Classes            7:00 p.m. Chancel Choir Rehearsal            7:00 p.m. Victory in Jesus Bible Study</p> <p><b>Friday, February 7</b>            5:30-6:30 p.m. Yoga – Yoga Room</p> <p><b>Sunday, February 9</b>            10:00 a.m. Morning Worship            11:30 a.m. Christian Education            11:30 a.m. Finance Committee            12:30 p.m. Victory in Jesus Ministries</p> <p><b>Monday, February 10</b>            9:00 a.m.-2:00 p.m. GIL Classes            9:00 a.m.-4:00 p.m. AARP Tax Assistance            10:00 a.m. Staff Meeting            5:30-6:30 p.m. Yoga – Yoga Room            6:30 p.m. Bells of First Rehearsal</p>	<p><b>Tuesday, February 11</b>            9:00 a.m.-2:00 p.m. GIL Classes            9:00 a.m.-4:00 p.m. AARP Tax Assistance            5:30 p.m. Worship Committee            6:30-9:00 p.m. Glen Erin Pipe Band            7:00 p.m. Capital City Chordsmen</p> <p><b>Wednesday, February 12</b>            9:00 a.m.-2:00 p.m. GIL Classes            10:30 a.m. Lectionary Bible Study            4:30 p.m. Lansing Children Choir            5:30-6:30 p.m. Yoga – Yoga Room            6:00 p.m. Wired Word Bible– Zoom            7:00 p.m. Deacons Meeting</p> <p><b>Thursday, February 13</b>            9:00 a.m.-2:00 p.m. GIL Classes            9:00 a.m.-2:00 p.m. NWI Food Distribution            7:00 p.m. Chancel Choir rehearsal            7:00 p.m. Victory in Jesus Bible Study</p> <p><b>Friday, February 14</b>            5:30-6:30 p.m. Yoga – Yoga Room</p> <p><b>Sunday, February 16</b>            10:00 a.m. Morning Worship            11:30 a.m. Christian Education            12:30 p.m. Victory in Jesus Ministries</p> <p><b>Monday, February 17</b>            9:00 a.m.-2:00 p.m. GIL Classes            9:00 a.m.-4:00 p.m. AARP Tax Assistance            10:00 a.m. Staff Meeting            5:30-6:30 p.m. Yoga – Yoga Room            6:30 p.m. Bells of First Rehearsal</p> <p><b>Tuesday, February 18</b>            9:00 a.m.-2:00 p.m. GIL Classes            9:00 a.m.-4:00 p.m. AARP Tax Assistance            2:30 p.m. Building/Grounds Mtg            6:00 p.m. Mid MI Photo Officers            6:30-9:00 p.m. Glen Erin Pipe Band            7:00 p.m. Capital City Chordsman</p> <p><b>Wednesday, February 19</b>            9:00 a.m.-5:00 p.m. GIL Classes            10:30 a.m. Lectionary Bible Study            12:00 p.m. Boomers/Beyond Lunch            4:30-6:30 p.m. Lansing Children's Choir            5:30-6:30 p.m. Yoga – Yoga Room            6:00 p.m. Wired Word Bible– Zoom            7:00 p.m. Session Meeting</p>
---	--

<p><b>Thursday, February 20</b>  9:00 a.m.-5:00 p.m. GIL Classes  6:30 p.m. Capitol City Quilt Guild  7:00 p.m. Chancel Choir Rehearsal  7:00 p.m. Victory in Jesus Ministries</p> <p><b>Friday, February 21</b>  5:30-6:30 p.m. Yoga – Yoga Room</p> <p><b>Sunday, February 23</b>  10:00 a.m. Morning Worship  11:30 a.m. Annual Congregational Mtg  12:00 a.m. Christian Education  12:30 p.m. Victory in Jesus Ministries</p> <p><b>Monday, February 24</b>  9:00 a.m.-2:00 p.m. GIL Classes  9:00 a.m.-4:00 p.m. AARP Tax Assistance  10:00 a.m. Staff Meeting  5:30-6:30 p.m. Yoga – Yoga Room  6:30 p.m. Bells of First Rehearsal</p>	<p><b>Tuesday, February 25</b>  9:00 a.m.-2:00 p.m. GIL Classes  9:00 a.m.-4:00 p.m. AARP Tax Assistance  6:30-9:00 p.m. Glen Erin Pipe Band  7:00 p.m. Capital City Chordsmen</p> <p><b>Wednesday, February 26</b>  9:00 a.m.-2:00 p.m. GIL Classes  10:30 a.m. Lectionary Bible Study  4:30-6:30 p.m. Lansing Children's Choir  5:30-6:30 p.m. Yoga – Yoga Room  6:00 p.m. Wired Word Bible– Zoom</p> <p><b>Thursday, February 27</b>  9:00 a.m.-2:00 p.m. GIL Classes  9:00 a.m.-2:00 p.m. NWI Food Distribution  1:00 p.m. Bridge in the Parlor  7:00 p.m. Chancel Choir Rehearsal  7:00 p.m. Victory in Jesus Ministries</p> <p><b>Friday, February 28</b>  5:30-6:30 p.m. Yoga – Yoga Room</p>
--	--